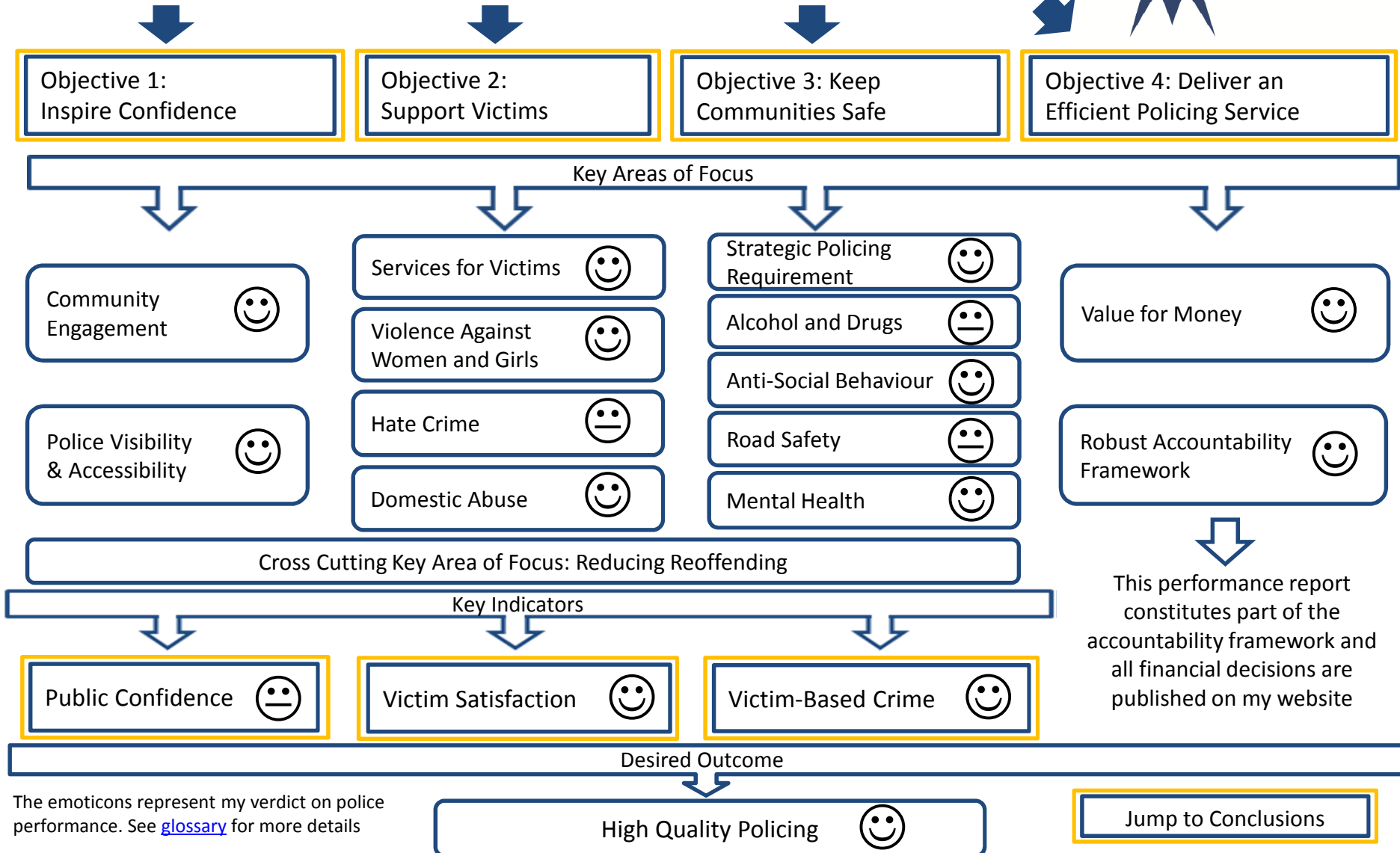




To place the current performance in context, [click here](#) to view a recent history of the Constabulary's performance. Otherwise, click each of the key areas of focus, key indicators and the desired outcome below to see how the Constabulary is performing in these areas.

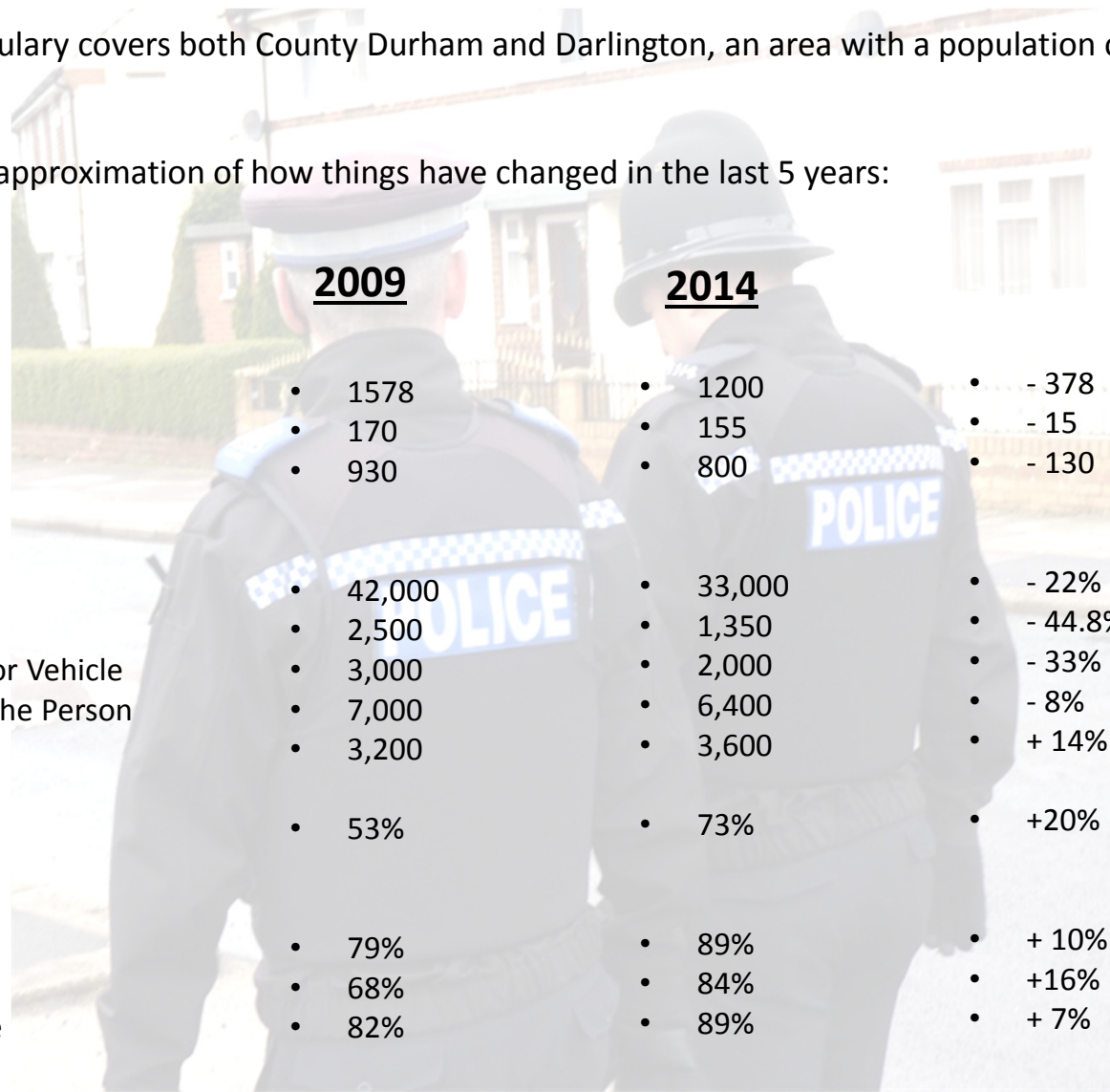
My Vision: Inspire confidence in policing by ensuring efficient and effective services are delivered to support victims and keep all our communities safe.



The emoticons represent my verdict on police performance. See [glossary](#) for more details

Recent Performance

- Durham Constabulary covers both County Durham and Darlington, an area with a population of around 623,000 people
- Below shows an approximation of how things have changed in the last 5 years:



Staff Numbers

- Police Officers
- PCSOs
- Police Staff

2009

2014

- 1578
- 170
- 930

- 1200
- 155
- 800

- - 378
- - 15
- - 130

Crimes

- Overall Crime
- Burglary Dwelling
- Theft from a Motor Vehicle
- Violence Against the Person
- Shoplifting

- 42,000
- 2,500
- 3,000
- 7,000
- 3,200

- 33,000
- 1,350
- 2,000
- 6,400
- 3,600

- - 22%
- - 44.8%
- - 33%
- - 8%
- + 14%

Confidence

- 53%

- 73%

- +20%

Victim Satisfaction

- Actions Taken
- Follow Up
- Whole Experience

- 79%
- 68%
- 82%

- 89%
- 84%
- 89%

- + 10%
- +16%
- + 7%

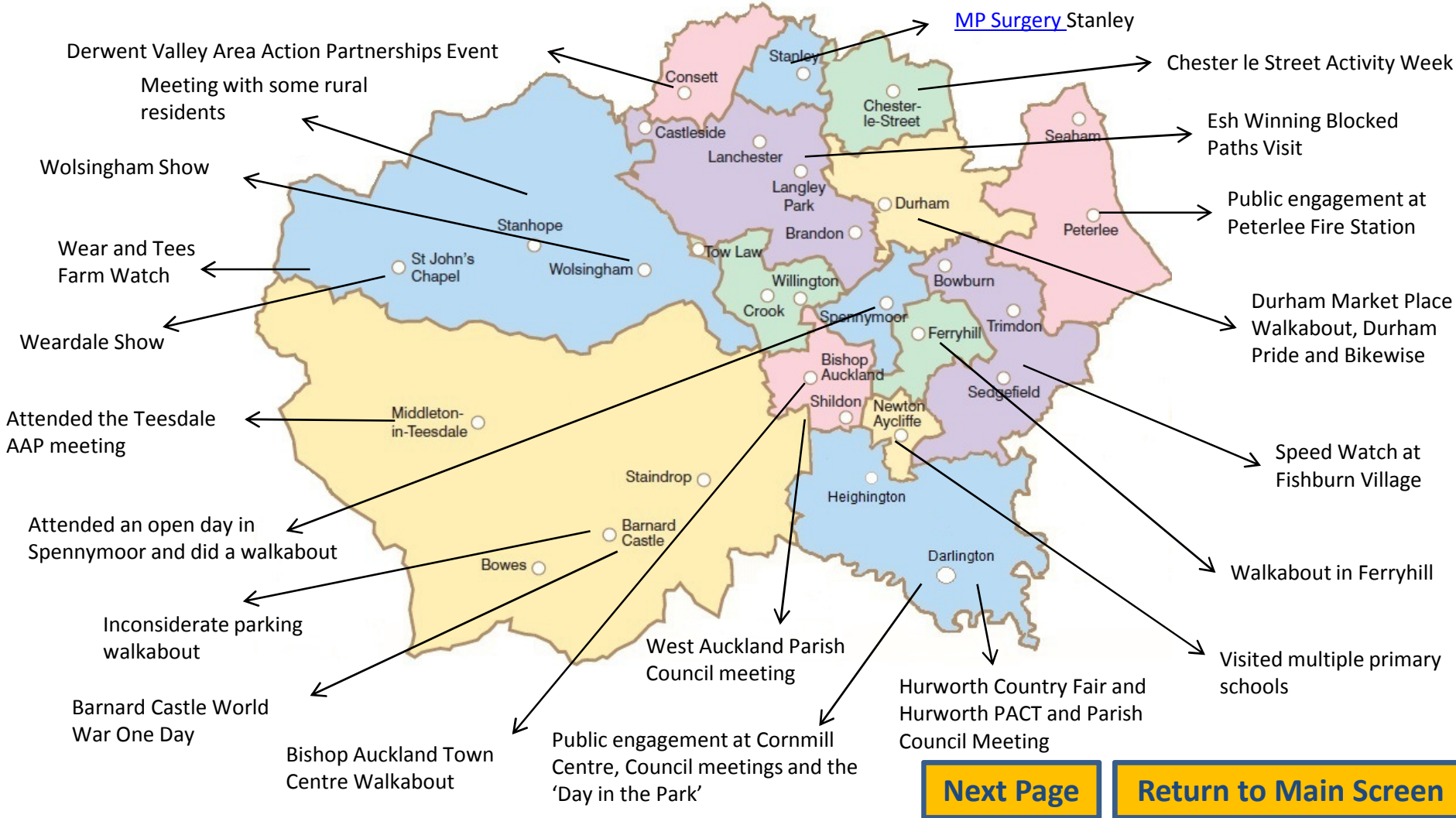
[Next Page](#)

[Return to Main Screen](#)

Objective 1: Inspire Confidence

Key area of focus: Improve my engagement with the communities across County Durham and Darlington

I attend many events and hold my own engagement activities with the community. Below are some of the key examples of places I have been. I keep track of my engagement to ensure I travel across the whole of the area and allow all residents the chance to attend a local meeting with me and have a voice. I will be starting a series of 'Community Days' in the next quarter, in which I will spend a whole day in one AAP area at a time, visiting different projects and local people. In quarter 2 this year, 161 surveys have been completed by my office with members of the public to seek their views.



[Next Page](#)

[Return to Main Screen](#)

Objective 1: Inspire Confidence

Key area of focus: Make our policing service more **visible and accessible** at all times

Local Survey	2014/15								2015/16			PCC Verdict
	Q1	Q2	% Diff	Q3	% Diff	Q4	% Diff	Year End	Q1	Q2	% Diff	
People who think the police in this area are easy to contact	61%	59%	-2 %	59 %	0	58%	-1%	60 %	58 %	60.7%	+2.7%	😊
People who are aware the police hold regular, public meetings, to discuss with members of the public the issues the police should be dealing with (PACT)	56%	55%	-1 %	56 %	+1 %	55%	-1%	56 %	55 %	59.7%	+4.7%	😊

The Constabulary has advised me they are aware that these figures are linked to overall public confidence, and they are working on increasing public awareness of what the police are doing. It is positive that there has been an increase in awareness in the last quarter, but I would like to see this improve further. There are reviews taking place to make sure PACT meetings are as effective as possible.

	September 2014	September 2015	Difference	PCC Verdict
Police Officers	1,237	1,187	- 50	😊 I am happy with the Constabulary's performance; not about the cuts to police officer numbers.
Special Constabulary	90	104	+ 14	
Police Staff*	1,026	1,060	+ 34	
Volunteers	235	244	+ 9	
Total	2,588	2,595	+ 7	

*Police staff includes PCSOs

I have made an explicit commitment to protect neighbourhood policing. Despite numbers in police officers declining in the past year, recruitment is currently under way for new police officers and special constables. Furthermore, the [HMIC](#) Value for Money profile shows the Constabulary is spending more on having visible frontline officers rather than staff, compared to the most similar forces. The number of support staff is stable, which is again positive at a time when the budgets are being cut. Despite austerity, the capacity of the Constabulary as a whole remains at a similar level to this time last year. The Constabulary has reviewed its shift pattern in order to improve allocation of resources to peak periods of demand and is looking to introduce mobile data technology to increase visibility, by reducing the need for officers to return to stations.

[Next Page](#)

[Return to Main Screen](#)

Objective 2: Support Victims

Key area of focus: Commission effective, appropriate and efficient **services for victims**

- I have, in collaboration with Cleveland PCC, re-commissioned the services of **Victim Support** for 2015-16.
- Research is currently being undertaken to get a full detailed understanding of what services are currently available for victims and therefore what the needs will be for next year (2016-17). I intend to make decisions about funding allocations before the end of this calendar year.
- In addition to the funds given to Victim Support, over £149,000 was awarded to 21 projects across County Durham and Darlington through my Community Safety Fund, in partnership with County Durham Community Foundation. The successful projects are those which support my objectives, of which providing support and services to victims is a key area. Further details on those who were successful in their bid can be found on my website and more information on my funding can be seen in the Value for Money section of this report.
- An allocation of funding was provided to me to contribute towards restorative justice in the Force area. This has been used to employ two restorative justice co-ordinators, one for Durham and one for Darlington. They have been working with partners to look at what is needed to ensure restorative justice is available to all victims who request it at any point throughout the criminal justice system. From April – December 2014, 20% of the solved cases involved a restorative approach.

Not only do restorative approaches empower the victim by giving them a say in the outcome for the offender, but they also reduce reoffending by enabling the offender to see the personal impact their crime has had on the victim and offering them the chance to apologise for what they have done.

- Due to the popularity restorative justice has had and the successful outcomes that have been delivered, the co-ordinators are currently recruiting for volunteers to be trained as restorative justice facilitators. For information contact kevin.thompson@darlington.gov.uk.



Next Page

Return to Main Screen

Objective 2: Support Victims

Key area of focus: Deliver the regional **Violence Against Women and Girls Strategy**

I have developed the regional Violence Against Women and Girls Strategy , along with my counterparts in Northumbria and Cleveland. It includes both joint activities and priorities, and ones specific to each locality.

The strategy covers a range of issues including:

- Domestic and sexual violence and abuse
- Human trafficking and sex work
- Harassment and stalking
- Forced marriage and so-called honour-based violence (HBV)
- Female Genital mutilation (FGM)

Across County Durham and Darlington progress has been made towards achieving the strategy in a number of areas:

- Forced marriage, HBV and FGM have all been included in the domestic abuse training for police officers to help them recognise the signs and know how to respond to them. I have commissioned a specialised support worker to offer support services and help raise awareness around these offences. The domestic abuse training also now includes stalking and harassment training, with new emerging threats, such as the use of online/cyber tools, being used to facilitate these crimes.
- I have set up a Rape Scrutiny Panel to conduct an independent in-depth review of randomly selected rape cases to ensure they have been handled correctly, to highlight any concerns and identify learning. The panel has been in place almost a year and has submitted its first report to the force.
- The charity Changing Lives are investigating the extent of any sex work industry within the Constabulary area, or across borders, and will be producing an informed report to ensure we are aware of what is happening in our area and have the necessary services available.
- Almost **800** domestic abuse champions have been trained in our area, in employment, public and private sectors. This is particularly good news as they provide confidential help and support to sufferers at many different locations, making access as easy as possible.

[Next Page](#)

[Return to Main Screen](#)

Objective 2: Support Victims

Key area of focus: Reduce the impact of hate crime

A Hate Crime is a crime that is targeted at a specific person or group due to a prejudice against certain characteristics. These protected characteristics are: disability, race or ethnicity, religion, sexual orientation and gender identity. Durham Constabulary, with my support, has also added alternative lifestyle, sex, age, pregnancy and marriage/civil partnership to this list.

Crime Type	12 months to end September 2013	12 months to end September 2014	% Difference	12 months to end September 2015	% Difference	PCC Verdict
Overall Hate Incidents	331	415	25.4%	369	- 11.1%	☹️
Racial Prejudice Incidents	237	270	13.9%	224	- 17%	☹️

Overall, Hate Crime incident statistics are generated using protective characteristic qualifiers that are attached by the handler to the case, as they are not all individual criminal offences. Racial prejudice accounts for a large percentage of the overall figures.

It can be seen in the table above that from 2012/13 to 2013/14, the reported incidents increased. I see this as positive because hate crime is an under-reported and less recognised area of crime, and it suggests awareness and confidence to report has increased. This conclusion was drawn as a number of campaigns were carried out around this time. Although recorded incidents have begun to decrease again, it is important to note that 'overall hate incidents' that have been reported remain higher than back in 2013. Furthermore, when breaking the reports down into each type of hate crime, disability and age prejudice have seen a rise in reporting. Another awareness raising week will take place in October. It is important that organisations, including myself, continue to work together to build confidence for victims to come forward, as it remains an under-reported crime that still has a lower level of awareness about it than most other crimes.

Durham Constabulary is focusing on the levels of service these victims receive, with satisfaction surveys being completed. However, numbers are so low they have not yet gathered sufficient data to be able to generalise results across the Constabulary. They will continue to carry out the satisfaction surveys to ensure these victims are receiving optimum service levels. I am actively monitoring the progress in this work and I hope to be able to bring you data on this by the end of the financial year.

Hate Crime Resource Packs

30 packs had been issued in County Durham and Darlington by May 2015, to raise awareness about hate crime and the impacts it can have. DAAC and the Constabulary have delivered the seminar to over 1000 young people so far.

Safe Places Scheme

I have led this strategy, in which central public areas can register to become a safe place for people who are suffering from hate crimes or feel threatened. As of September 2015, there are currently around 60 Safe Places set up across the area, with new locations signing up to the scheme every few weeks. A list of the locations that are part of the scheme can be viewed on my website.

[Next Page](#)

[Return to Main Screen](#)

Objective 2: Support Victims

Key area of focus: Reduce the incidence and impact of **domestic abuse** in all its forms

	12 months to end September 2013	12 months to end September 2014	% Difference	12 months to end September 2015	% Difference	PCC Verdict
Domestic Abuse*	14,035	15,120	+ 7.7%	15,178	+ 0.4 %	😊

* These are cases that have been flagged with the Domestic Abuse qualifier as Domestic Abuse is not a criminal offence in itself in law

My regional counterparts, the Constabulary, local partners and I have done a lot of work to increase awareness around domestic abuse. As well as reducing offending, the aim is also to help victims feel confident enough to report and access the services they need.

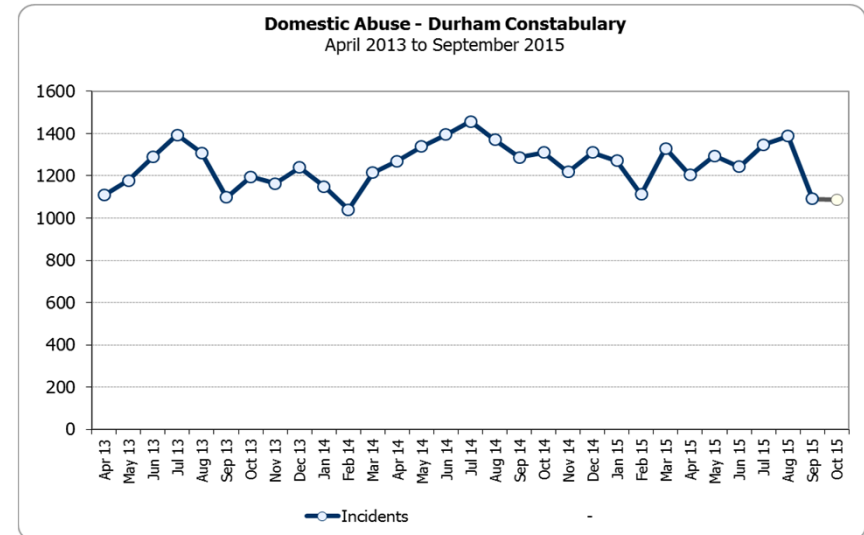
- The force recently launched a new **“Sorry is not enough”** campaign aimed at increasing awareness of domestic abuse and the help available, with the aim to increase reporting.
- The increase in reported incidents shown in the table above is encouraging, as it shows more victims are reporting to the police. In the last few months reports are stabilising rather than continuing to increase. This suggests the increase is due to a growth in confidence, not a growth in the incidents occurring.
- Body worn cameras are now also used to view domestic abuse incidents **‘through the eyes of the child’** to ensure the impact it has on children is not overlooked.
- A **Knowledge Transfer Partnership with Durham University**, that I have funded to develop further training for domestic abuse, is now being rolled out to officers.

I am currently reviewing the profile of people accessing domestic abuse support services to see how accurately this mirrors the victims we are aware of. This will allow me to see if there are certain groups who may be unaware of, or struggling to access, the available support.

- Referrals to [MARAC](#) have increased by 50%, but repeat rates are around 14%, which is one of the lowest in the country.

In quarter 2 of this year, there were **1,016** crimes recorded with a domestic abuse qualifier, of which **437 victims were female, 94 victims were male** and 403 were not specified. **74 female offenders** and **507 male offenders** were linked to these crimes. Systems are currently being amended to ensure the recording of a victim’s gender is mandatory.

It is important that all victims of domestic abuse feel confident to come forward to the police and access support services, regardless of gender or sexual orientation.



Next Page

Return to Main Screen

Objective 3: Keep Communities Safe

Key area of focus: Deliver the **Strategic Policing Requirement** and understand and tackle emerging threats

This is a requirement set by the Government to counter threats that have the potential to become a national issue and so may require cross boundary responses. It currently covers the following areas:

- **Terrorism:**

Durham Constabulary chairs the *County Durham and Darlington Contest Board* which sits with fifteen partner organisations and facilitates the local delivery of the Government's *Contest Strategy* in order to combat the threat from terrorism and extremism. It also continues to work with partners through the *County Durham and Darlington Local Resilience Forum* to maintain and develop our capability to respond to major incidents, including a terrorist attack.

- **Organised Crime:**

This is any serious, planned and co-ordinated crime, usually conducted by a group of people working together, for example drug trafficking, human trafficking and counterfeiting. Durham Constabulary follows the Serious and Organised Crime Strategy released by the Home Office in late 2013. Work is currently under way to align the approach with the 4 P's: Prepare, Prevent, Protect, and Pursue, as set out in the strategy, and working closely with partner organisations is a key part of identifying signs or risk factors to try and stay ahead.

- **Public Disorder and Civil Emergencies:**

Procedures are in place that mean if a large scale emergency or event of public disorder were to happen, such as a major transport accident or riots, Police Forces and other services from across the country will come together to supply the necessary resources to manage as effectively as possible.

- **Cyber Threats / Crime:**

A Force cybercrime profile has been completed to gain an understanding as to the nature of the threats that are posed and a Regional Cyber Crime Unit (RCCU) has been set up covering Durham, Northumbria and Cleveland. A working group has been set up, with a cyber action plan including: awareness campaigns, partnership working, training, acquisition of equipment and intelligence gathering.

- **Child Sexual Abuse (CSA):**

There is work ongoing between partner organisations to not only ensure any children in vulnerable positions receive the best possible care and interventions, but also to look to identify any potential child sexual exploitation risks in our area.

Durham Constabulary are currently the only force in the country to be receiving 'Intervene to Protect a Child' training from forensic psychologist Dr Joe Sullivan, a world renowned expert on CSA, helping them to spot potential signs that would have previously been unnoticed or not investigated further. This is already starting to see positive results with actions being taken as a preventative measure rather than risking it being too late.

[Next Page](#)

[Return to Main Screen](#)

Objective 3: Keep Communities Safe

Key area of focus: Tackle the harm caused to individuals and communities by alcohol and drugs

Crime Type	12 months to end September 2013	12 months to end September 2014	% Difference	12 months to end September 2015	% Difference	PCC Verdict
Alcohol related incidents (% of all incidents)	Statistics are not comparable this far back as there was a change in recording	11.5%	-	10.9%	- 0.6%	☹️
Drug offences	1,249	1,503	+ 20.3%	1,250	-16.8%	😊
Drug offences outcome rate	97 %	96.8%	- 0.2%	97.5%	+ 0.7%	😊

Due to fantastic targeted operations by the Constabulary, drug offences have excellent outcome rates and the number of offences is now beginning to fall. This is very encouraging. Although the percentage of alcohol related incidents has not increased, and the percentage is relatively low, it remains important to monitor as a decrease in incidents could contribute to reductions across many crime types.

	2014/15							2015/16			PCC Verdict	
	Q1	Q2	% Diff	Q3	% Diff	Q4	% Diff	Year End	Q1	Q2		% Diff
% People who think people drinking and causing a nuisance in public spaces is a problem	36.7%	38.3%	+1.6%	40.3%	+2%	35.3%	-5%	37 %	30.7%	35.7%	+5%	☹️
% People who think underage drinking and sale of alcohol to youths is a problem	45%	44.7%	- 0.3%	52%	+7.3%	43.7%	-8.3%	46 %	44%	43.3%	-0.7%	☹️
% People who think drug dealing and abuse is a problem	36%	38.7%	+ 2.7%	43.7%	+5%	39%	-4.7%	39 %	37%	38.7%	+1.7%	☹️

Unfortunately, public perceptions around the problems caused by drugs and alcohol in our area are not as positive, and so this is an area I have highlighted to be focused on. I appreciate that public perceptions can be influenced by factors outside of the police's control, and the increases for quarter 2 could be linked to the school summer holidays. However, alcohol seizures were carried out by the police in a number of parks.

Working to reduce the harm caused by both alcohol and drugs is an area in which I am working closely with partner organisations, including the Darlington Community Safety Partnership and Safe Durham Partnership, as we all share this priority.

[Next Page](#)

[Return to Main Screen](#)

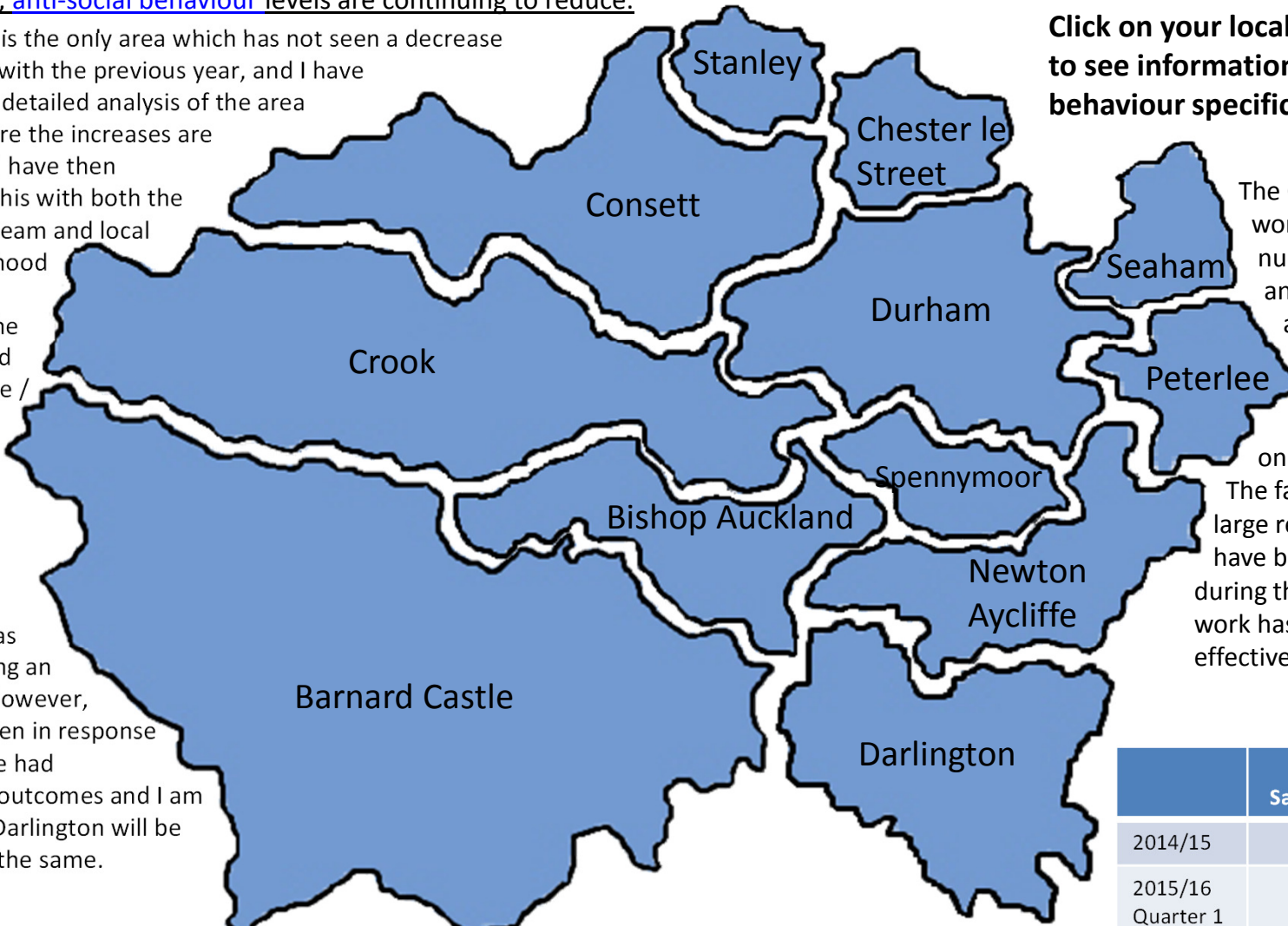
Objective 3: Keep Communities Safe

Key area of focus: Tackle **anti-social behaviour**

Overall, [anti-social behaviour](#) levels are continuing to reduce.

Darlington is the only area which has not seen a decrease compared with the previous year, and I have conducted detailed analysis of the area to see where the increases are occurring. I have then discussed this with both the executive team and local neighbourhood team to establish the reasons and what can be / has been done to stop these increases.

In my last report, Durham was experiencing an increase. However, actions taken in response to this have had successful outcomes and I am confident Darlington will be able to do the same.



Click on your local policing sector to see information on anti-social behaviour specific to your area.

The Constabulary have worked hard to run a number of operations and range of initiatives across the summer months to limit the impact school holidays could have on anti-social behaviour. The fact that previous large reductions in incidents have been maintained during this time suggest this work has been extremely effective.

	Public Satisfaction	PCC Verdict
2014/15	89%	☹️
2015/16 Quarter 1	79%	
2015/16 Quarter 2	82%	

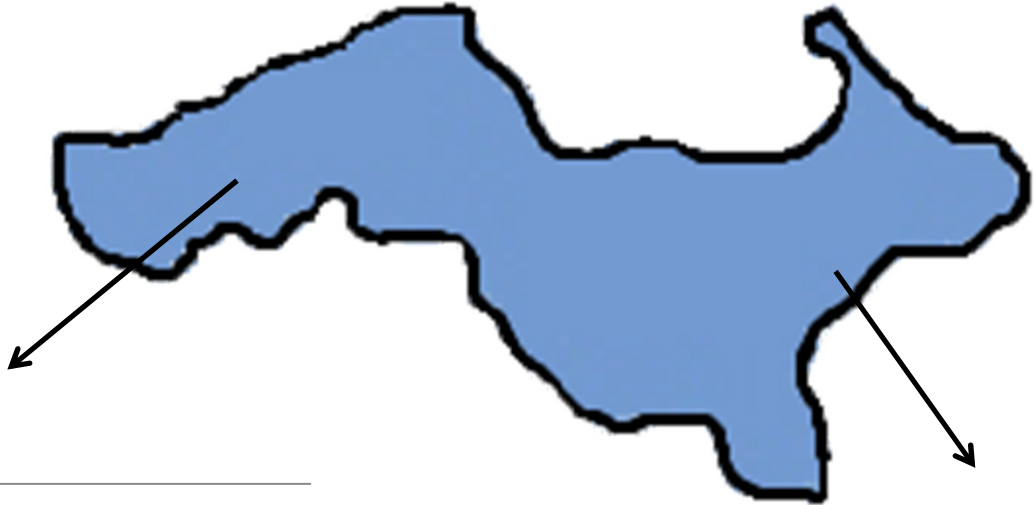
	12 months to end Sept 2014	12 months to end Sept 2015	Difference	PCC Verdict
Anti Social Behaviour (no. incidents / % alcohol related)	29,238 / 14.3%	27,172 / 11.5%	-7.1% / -2.8%	😊

[Next Page](#)

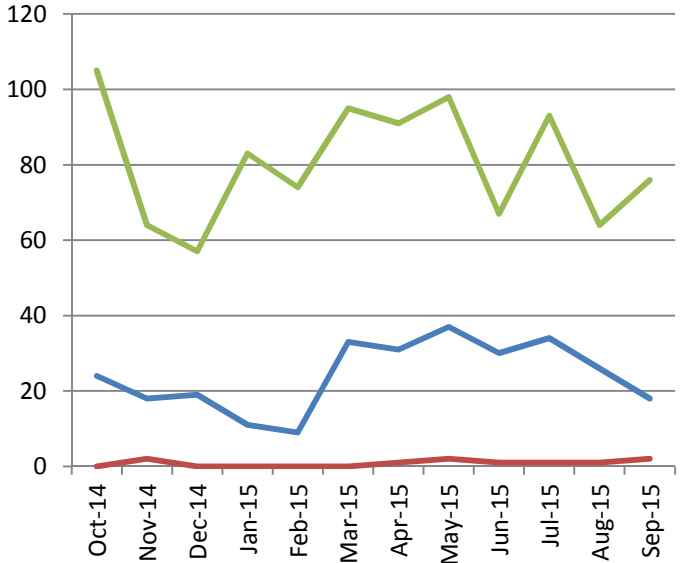
[Return to Main Screen](#)

Objective 3: Keep Communities Safe
Key area of focus: Tackle anti-social behaviour

Bishop Auckland



- Alcohol Related
- Drugs Related
- Youth Related



	12 months to end September 2014	12 months to end September 2015	% Difference	PCC Verdict
Total Anti-Social Behaviour	2,531	2,347	-7.3%	😊

[Back to Map](#)

[Next Page](#)

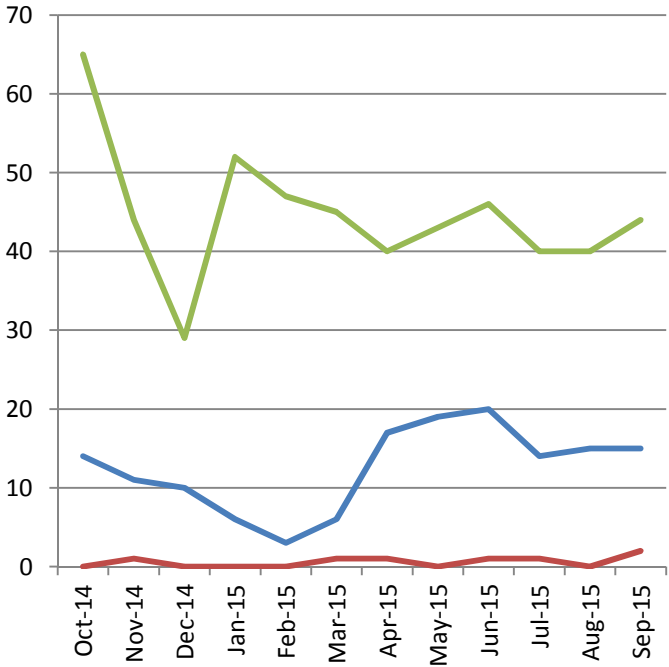
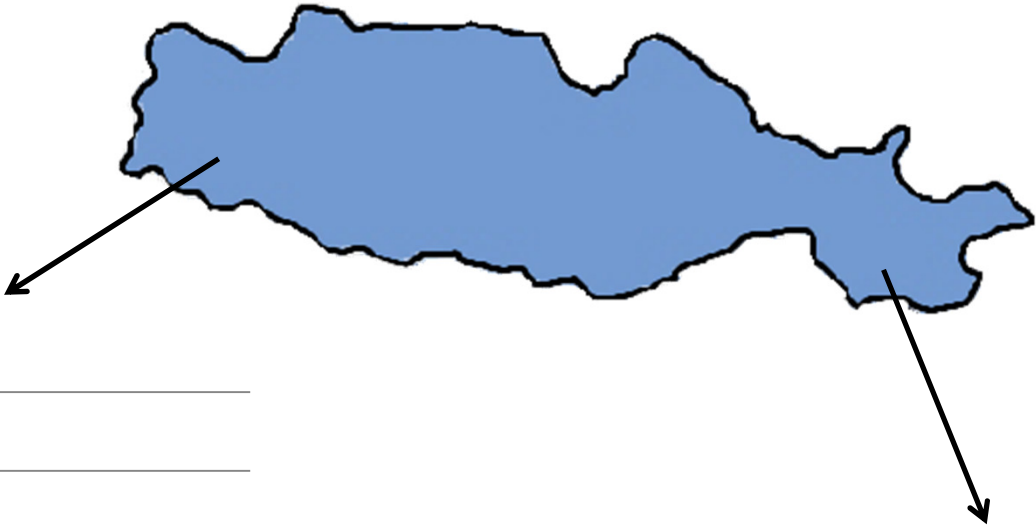
[Return to Main Screen](#)

Objective 3: Keep Communities Safe

Key area of focus: Tackle **anti-social behaviour**

Crook

- Alcohol Related
- Drugs Related
- Youth Related



	12 months to end September 2014	12 months to end September 2015	% Difference	PCC Verdict
Total Anti-Social Behaviour	1,453	1,449	-0.3%	😊

[Back to Map](#)

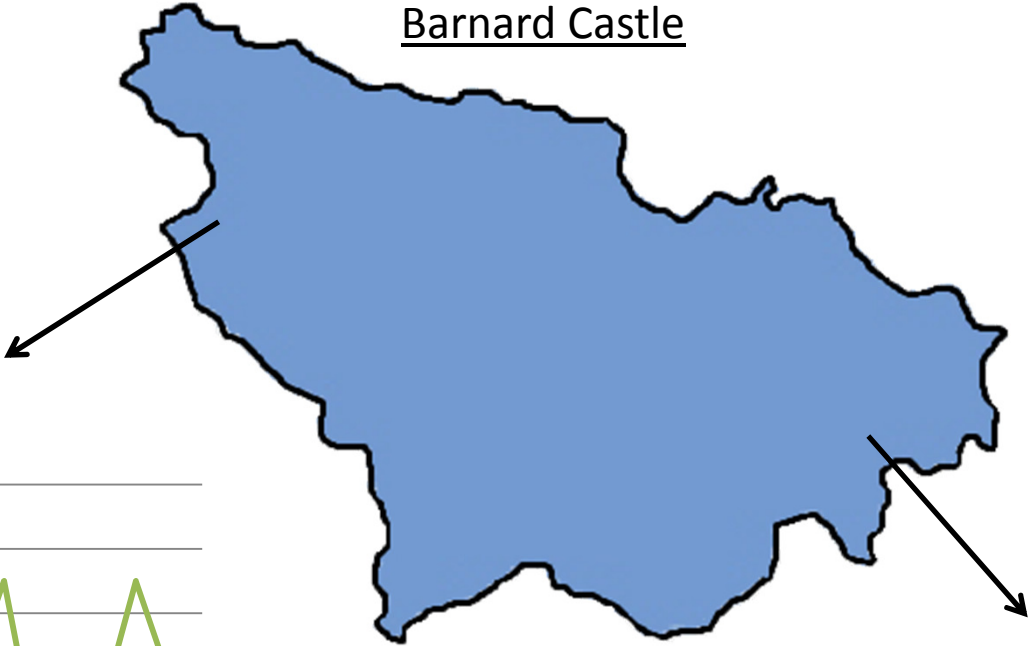
[Next Page](#)

[Return to Main Screen](#)

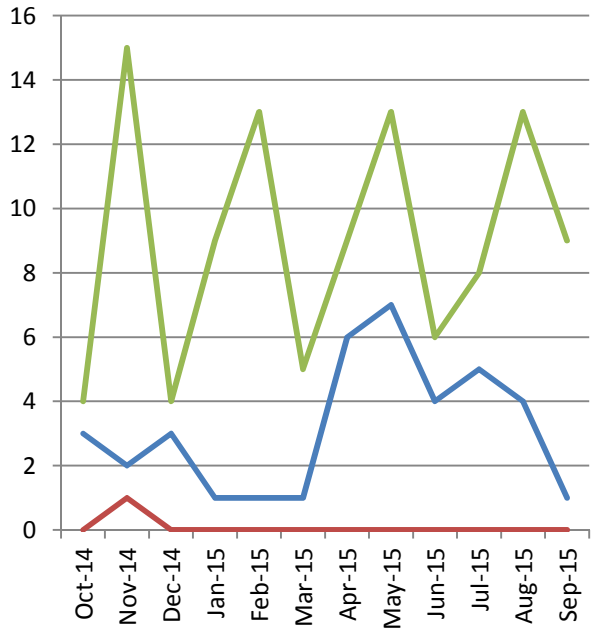
Objective 3: Keep Communities Safe

Key area of focus: Tackle **anti-social behaviour**

Barnard Castle



- Alcohol Related
- Drugs Related
- Youth Related



	12 months to end September 2014	12 months to end September 2015	% Difference	PCC Verdict
Total Anti-Social Behaviour	424	348	-17.9%	😊

[Back to Map](#)

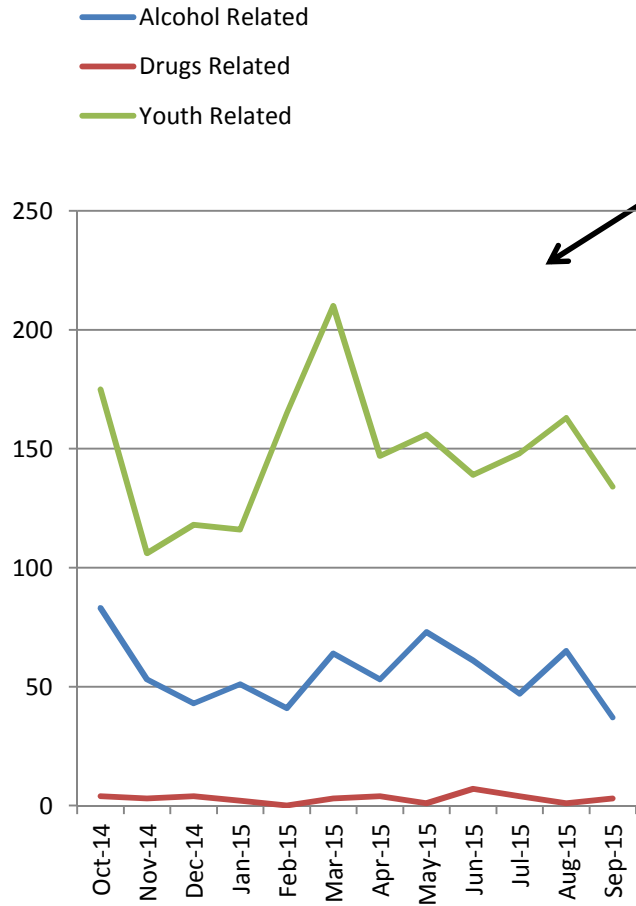
[Next Page](#)

[Return to Main Screen](#)

Objective 3: Keep Communities Safe

Key area of focus: Tackle **anti-social behaviour**

Darlington



	12 months to end September 2014	12 months to end September 2015	% Difference	PCC Verdict
Total Anti-Social Behaviour	5,308	5,404	+1.8%	☹️

[Back to Map](#)

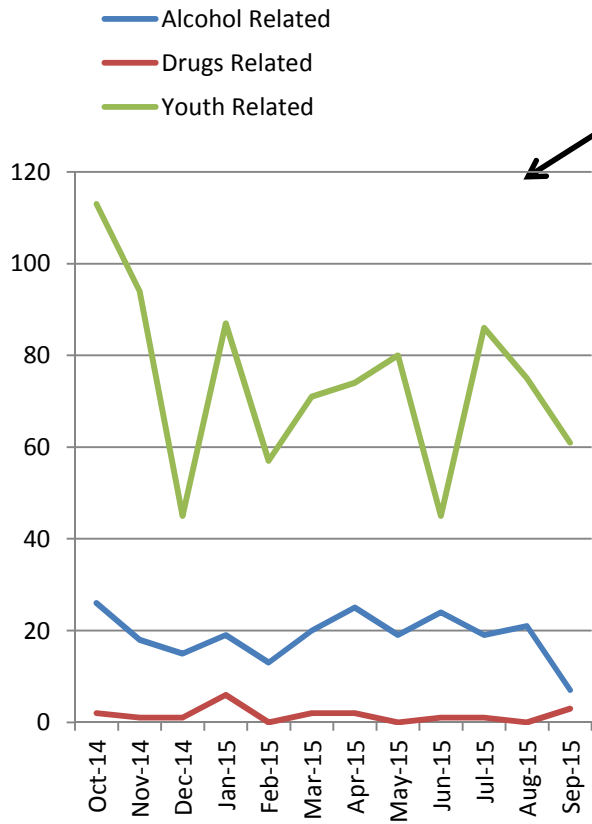
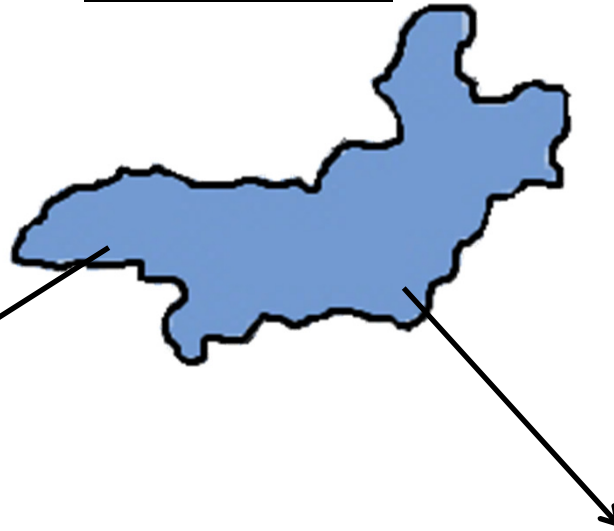
[Next Page](#)

[Return to Main Screen](#)

Objective 3: Keep Communities Safe

Key area of focus: Tackle **anti-social behaviour**

Newton Aycliffe



	12 months to end September 2014	12 months to end September 2015	% Difference	PCC Verdict
Total Anti-Social Behaviour	2,615	2,444	-6.5%	😊

[Back to Map](#)

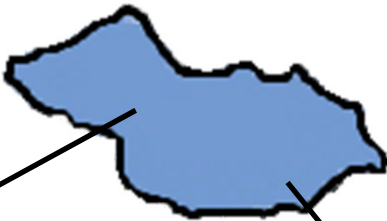
[Next Page](#)

[Return to Main Screen](#)

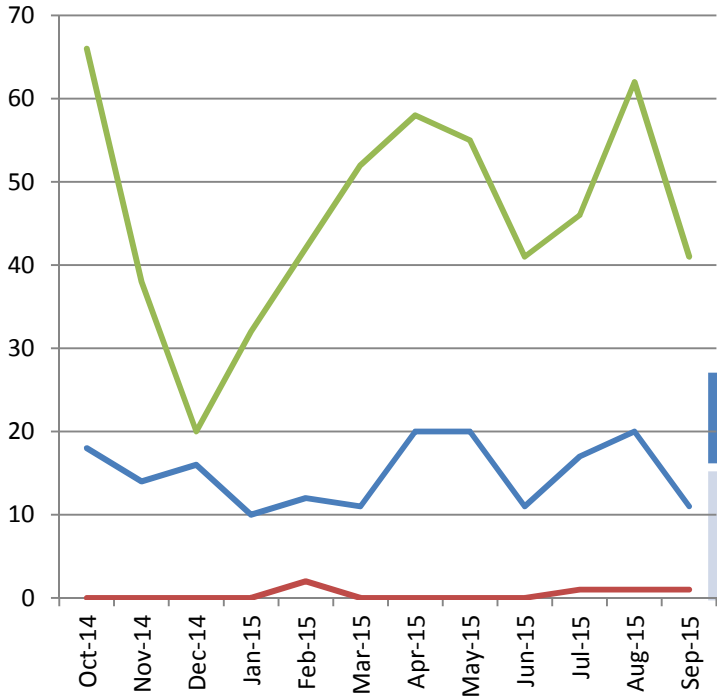
Objective 3: Keep Communities Safe

Key area of focus: Tackle **anti-social behaviour**

Spennymoor



- Alcohol Related
- Drugs Related
- Youth Related



	12 months to end September 2014	12 months to end September 2015	% Difference	PCC Verdict
Total Anti-Social Behaviour	2,143	1,770	-17.4%	😊

[Back to Map](#)

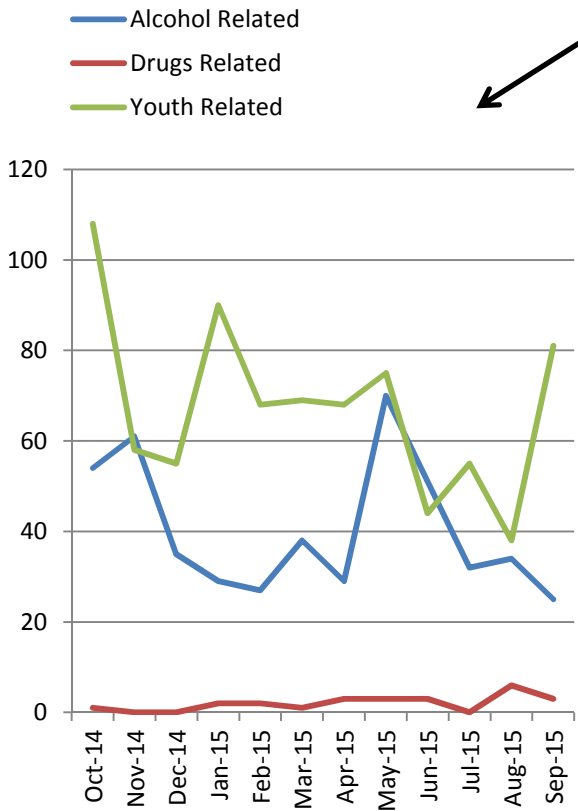
[Next Page](#)

[Return to Main Screen](#)

Objective 3: Keep Communities Safe

Key area of focus: Tackle **anti-social behaviour**

Durham



	12 months to end September 2014	12 months to end September 2015	% Difference	PCC Verdict
Total Anti-Social Behaviour	3,320	3,054	-8.0%	😊

[Back to Map](#)

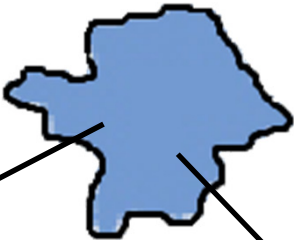
[Next Page](#)

[Return to Main Screen](#)

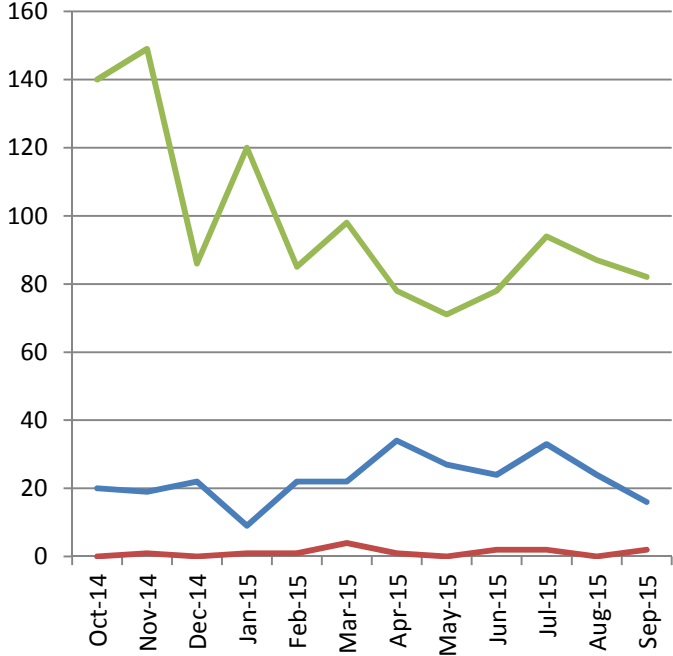
Objective 3: Keep Communities Safe

Key area of focus: Tackle **anti-social behaviour**

Peterlee



- Alcohol Related
- Drugs Related
- Youth Related



	12 months to end September 2014	12 months to end September 2015	% Difference	PCC Verdict
Total Anti-Social Behaviour	3,332	3,204	-3.8%	😊

[Back to Map](#)

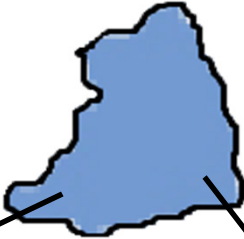
[Next Page](#)

[Return to Main Screen](#)

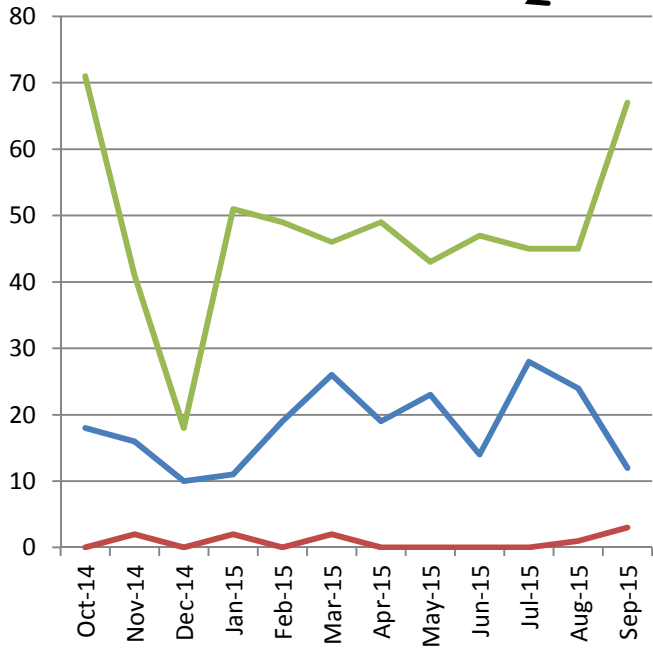
Objective 3: Keep Communities Safe

Key area of focus: Tackle **anti-social behaviour**

Seaham



- Alcohol Related
- Drugs Related
- Youth Related



	12 months to end September 2014	12 months to end September 2015	% Difference	PCC Verdict
Total Anti-Social Behaviour	1,957	1,819	-7.1%	😊

[Back to Map](#)

[Next Page](#)

[Return to Main Screen](#)

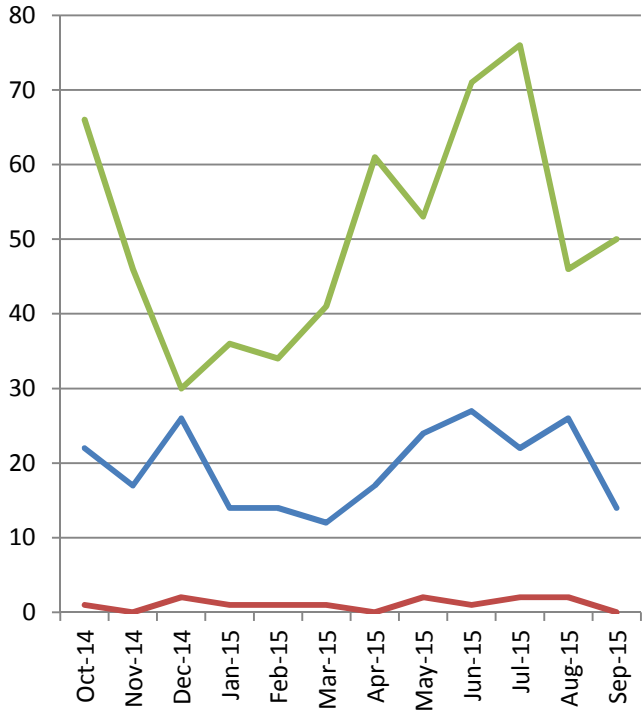
Objective 3: Keep Communities Safe

Key area of focus: Tackle **anti-social behaviour**

Chester le Street



- Alcohol Related
- Drugs Related
- Youth Related



	12 months to end September 2014	12 months to end September 2015	% Difference	PCC Verdict
Total Anti-Social Behaviour	2,258	1,881	-16.7%	😊

[Back to Map](#)

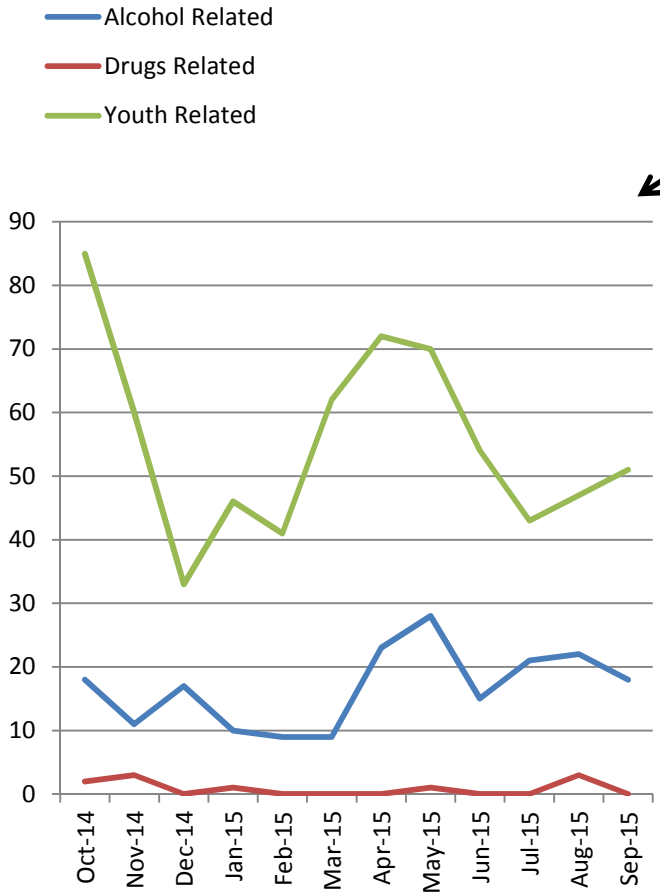
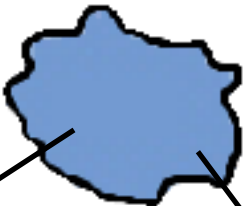
[Next Page](#)

[Return to Main Screen](#)

Objective 3: Keep Communities Safe

Key area of focus: Tackle **anti-social behaviour**

Stanley



	12 months to end September 2014	12 months to end September 2015	% Difference	PCC Verdict
Total Anti-Social Behaviour	1,905	1,783	-6.4%	😊

[Back to Map](#)

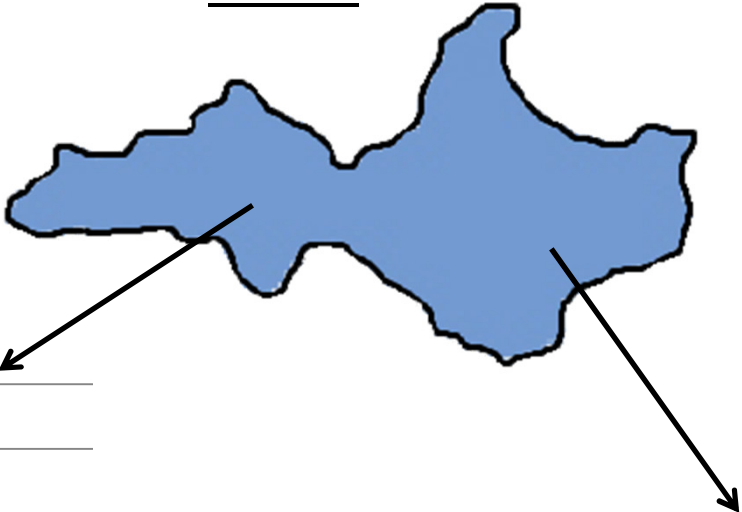
[Next Page](#)

[Return to Main Screen](#)

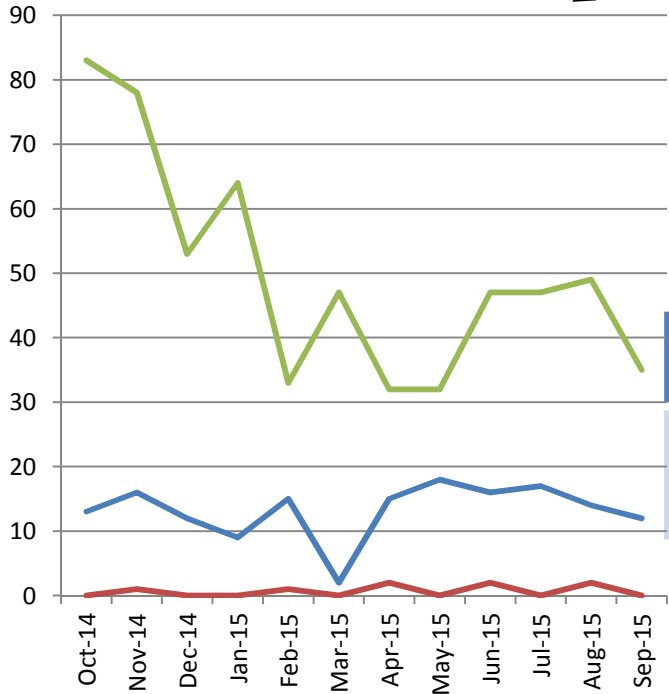
Objective 3: Keep Communities Safe

Key area of focus: Tackle **anti-social behaviour**

Consett



- Alcohol Related
- Drugs Related
- Youth Related



	12 months to end September 2014	12 months to end September 2015	% Difference	PCC Verdict
Total Anti-Social Behaviour	1,992	1,669	-16.2%	😊

[Back to Map](#)

[Next Page](#)

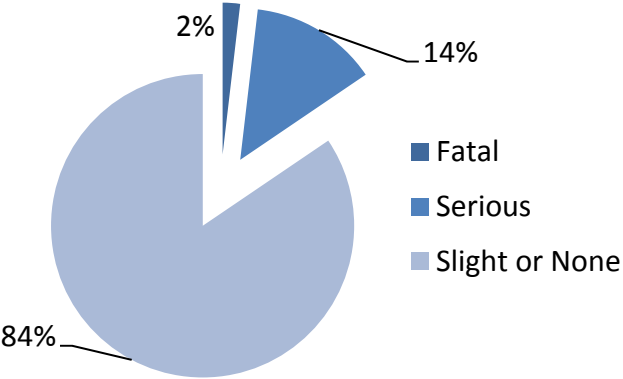
[Return to Main Screen](#)

Objective 3: Keep Communities Safe

Key area of focus: Improve road safety by tackling careless and dangerous driving, speeding and other road safety issues

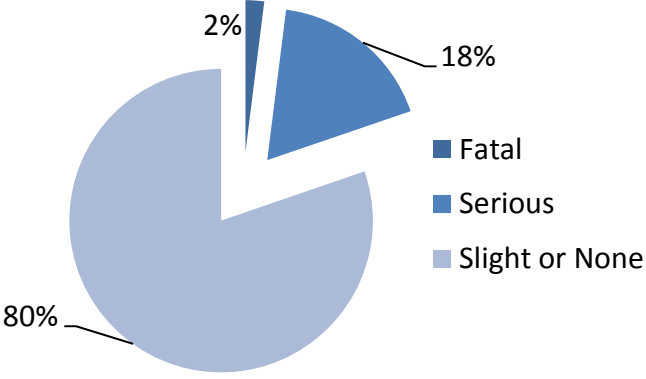
Although the number of reported road traffic incidents in County Durham and Darlington in the last 2 years has decreased, the percentage of those deemed as serious collisions has increased. A small number of the collisions have resulted in fatal injuries and, although it is positive that this percentage has not increased, I will endeavour to work with the Constabulary and partners to reduce fatalities and serious injuries.

Road Traffic Collisions 12 months to end Sept 2014



Total: 200 out of 1289 road traffic collisions where person(s) killed or seriously injured

Road Traffic Collisions 12 months to end Sept 2015



Total: 219 out of 1109 road traffic collisions where person(s) killed or seriously injured

Detailed research has been undertaken to analyse who is most at risk (e.g. possibly pedestrians, children, motorbikes etc.) and potential roads or areas that may have a higher level of collisions. See the next slide for localised data.

Road safety requires close partnership working and I will continue to support Durham County Council's implementation of 20mph speed limits/zones. The first will be launched in October.

Local Survey	2014/15								2015/16			PCC Verdict
	Q1	Q2	% Diff	Q3	% Diff	Q4	% Diff	Year End	Q1	Q2	% Diff	
People who think that dangerous driving is a problem	50 %	51 %	+ 1 %	53 %	+ 2 %	48 %	- 5%	49 %	52 %	53 %	+ 1 %	☹️
People who think that parking is a problem	47 %	52 %	+ 5 %	57 %	+ 5 %	50 %	- 7 %	51 %	50 %	50 %	-	☹️
People who think that speeding vehicles are a problem	67 %	66 %	- 1 %	66 %	-	61%	- 5%	65 %	65 %	68 %	+ 3%	☹️

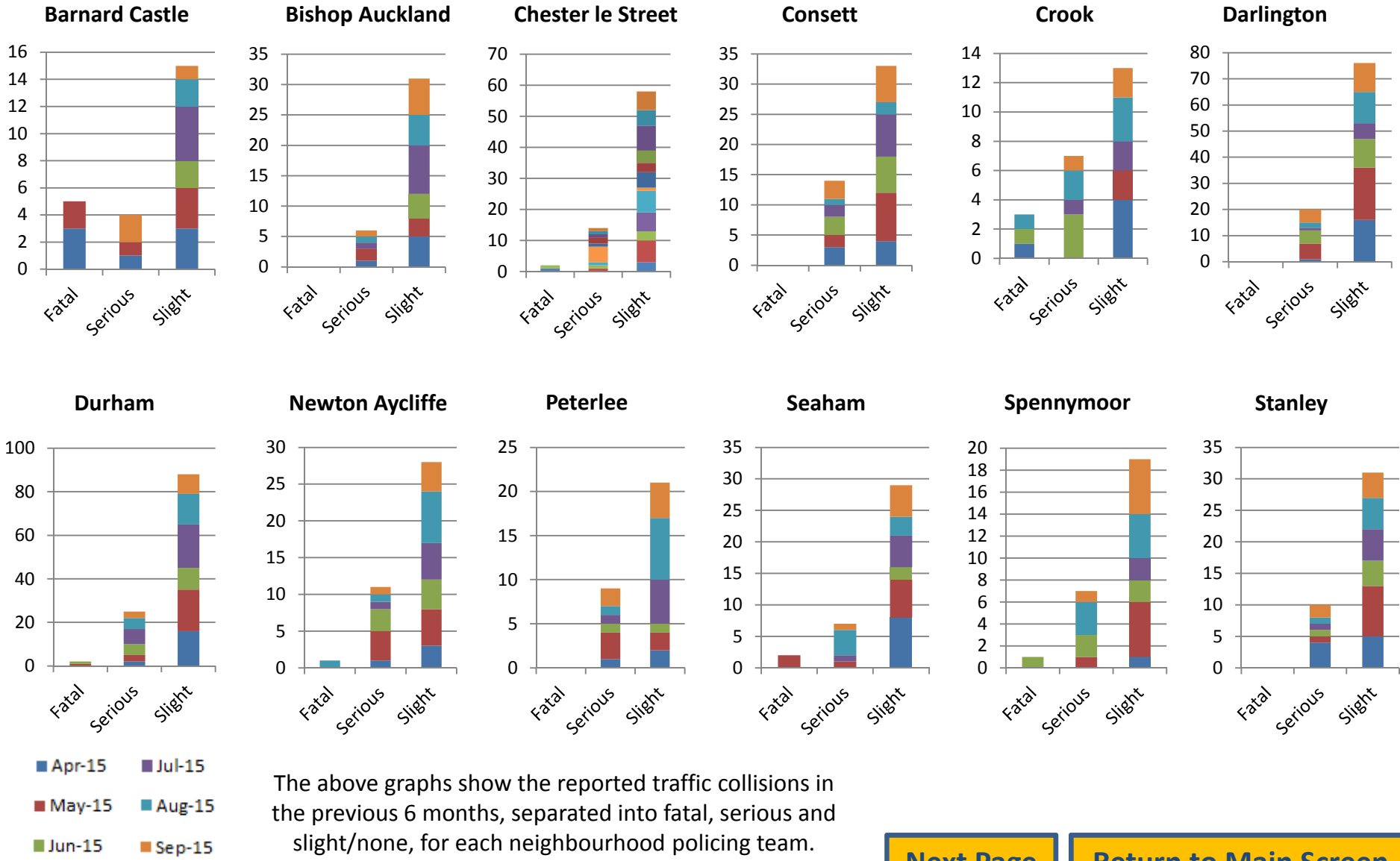
I have encouraged the Constabulary to continue Community Speedwatch with the support of volunteers. I have funded the purchase of traffic calming devices.

[Next Page](#)

[Return to Main Screen](#)

Objective 3: Keep Communities Safe

Key area of focus: Improve road safety by tackling careless and dangerous driving, speeding and other road safety issues



The above graphs show the reported traffic collisions in the previous 6 months, separated into fatal, serious and slight/none, for each neighbourhood policing team.

[Next Page](#)

[Return to Main Screen](#)

Objective 3: Keep Communities Safe

Key area of focus: Work with partners to improve the service provided to those with poor mental health (victims and offenders)

I have tasked the Constabulary with reducing the use of Section 136 of the Mental Health Act. This means reducing the number of people who are detained in police custody as a 'place of safety' during a mental health crisis. I would like to see the number of young people/youths reduced to zero for this year, which is currently on target.

Currently statistics are:

2014/15		2015/16			
April 2014:	5 adults, 1 youth	October 2014:	2 adults	April 2015:	3 adults
May 2014:	1 adult	November 2014:	1 adult	May 2015:	3 adults
June 2014:	5 adults	December 2014:	4 adults	June 2015:	2 adults
July 2014:	5 adults	January 2015:	3 adults	July 2015:	3 adults
August 2014:	2 adult	February 2015:	6 adults	August 2015:	4 adults
September 2014:	3 adult	March 2015:	1 adult	September 2015:	1 adult

Instead of using a police cell as a 'place of safety', officers are encouraged to take people to a specialised hospital or facility. However, two police officers must remain present throughout the process until the person is formally under the care of the hospital, using a great deal of police officer resource. Therefore, I want to reduce this waiting time to ensure patients are helped as quickly as possible and police resource is minimised. The average waiting times per officer are:

2013: 4 hours, 10 minutes

2014: 3 hours, 23 minutes

2015: 3 hours 13 minutes (April - Sept)

The amount of resource used each time would be double the length of the waiting time shown above, due to the necessity to have two officers present throughout. It is hoped that the introduction of a place of safety co-ordinator will see these times continue to reduce, and at a higher rate.

[Next Page](#)

[Return to Main Screen](#)

Cross cutting key area of focus: **Reduce Reoffending**

Reducing reoffending is key to cutting crime and reducing the number of victims. There are a number of initiatives and projects taking place across County Durham and Darlington that involve organisations working together in partnership, which are aimed at reducing reoffending.

Interventions often help perpetrators of crime to break their cycle of offending and make a positive contribution to society instead.

Following my successful bid for funding from the Police Innovation Fund, a ground breaking multi-agency initiative '**Checkpoint**', started its trial in April 2015. It takes a problem solving approach to look at the reason why someone has offended and what can be done to stop them by tackling that root cause. Offenders who agree to comply will be placed on a four month contract tailored to suit their individual case, for example a drug or alcohol intervention, voluntary work and wearing a GPS tag.

Should they successfully complete the contract then they will not have to progress through the criminal justice system, but if they fail to complete the contract, including reoffending of any kind, they will be prosecuted.

Checkpoint is only available to certain offenders who meet strict eligibility criteria, and it is only currently in the early stages but is rapidly growing. As of the end of Quarter 2 (September 2015) there were **233 active cases** with **25 people successfully completing their contract** so far.

I look forward to bringing you more information and detailed figures in the next performance report as the initiative grows. The programme will be formally evaluated by Cambridge University.



[Next Page](#)

[Return to Main Screen](#)

Police and Crime Plan Objective 1 Key Indicator: **Public Confidence**

Public Confidence (CSEW)	12 months to end of Sept 2014	12 months to end of Dec 2014	% Difference	12 months to end of Mar 2014	% Difference	12 months to end of June 2015	% Difference
% of people who think the police do a good job (Nationally)	62.5 %	62.1 %	- 0.4 %	61.8 %	- 0.3 %	62 %	+ 0.2 %
% of people who think the police do a good job (Durham)	63.7 %	63.5 %	- 0.2 %	64.4 %	+ 0.9 %	65.9 %	+ 1.5 %
'taking everything into account I have confidence in the police' (Nationally)	76.1 %	75.7 %	- 0.4 %	75.4 %	- 0.3 %	76.2 %	+ 0.8 %
'taking everything into account I have confidence in the police' (Durham)	76.3 %	76.4 %	+ 0.1 %	76.4 %	-	77 %	+ 0.6 %

Local Survey	2014/15							2015/16			PCC Verdict	
	Q1	Q2	% Diff	Q3	% Diff	Q4	% Diff	Year End	Q1	Q2		% Diff
% of people who think the police do a good job	72 %	70 %	- 2 %	69 %	- 1 %	68 %	- 1 %	70 %	68 %	68 %	-	☹️
'taking everything into account I have confidence in the police'	76 %	73 %	- 3 %	71 %	- 2 %	72 %	+ 1 %	74 %	73 %	72 %	- 1%	☹️

The Constabulary collaborated with Durham University to study what factors affect confidence locally and therefore produced a detailed local survey individual to our area, as well as that by the [CSEW](#). March 2015 is the latest CSEW available.

From the CSEW, Durham is consistently exceeding the national average level and is climbing up the national police force rankings. It is currently ranked 12th out of 42 police forces, the highest ranking in at least 8 years. Although the local survey data shows a small decline in the percent of people who have confidence in the police, it is above the national average. However, this is a very important area and the Constabulary must work hard to ensure that public confidence in them increases. Several projects are underway and I will be continuing to monitor progress closely.

[Next Page](#)

[Return to Main Screen](#)

Police and Crime Plan Primary Measure: **Victim Satisfaction**

Victim Satisfaction	2013/2014	2014/2015					% Difference	2015/16		% Difference	PCC Verdict
	Year End	Q1	Q2	Q3	Q4	Year End	Between 13/14 – 14/15	Q1	Q2	Between Q1 and Q2	
Whole Experience	89 %	93 %	90 %	85 %	91 %	90 %	+ 1 %	91 %	88 %	- 3 %	☹️
Ease of Contact	97 %	99 %	97 %	96 %	98 %	98 %	+ 1 %	100 %	100 %	-	😊
Arrival Time	88 %	91 %	90 %	87 %	89 %	89 %	+ 1 %	90 %	92 %	+ 2 %	😊
Actions Taken	90 %	93 %	91 %	85 %	89 %	90 %	0	91 %	88 %	- 3 %	☹️
Follow Up	84 %	88 %	85 %	83 %	80 %	84 %	0	82 %	81 %	- 1 %	☹️
Treatment	96 %	97 %	97 %	91 %	98 %	96 %	0	97 %	94 %	- 3 %	☹️

*Percentages are determined through a local victim satisfaction survey by Durham Constabulary with results collated quarterly.

I am pleased to be able to report high victim satisfaction in all areas. It is disappointing to see that there does appear to have been a slip in victim satisfaction in the most recent quarter, and I will be monitoring this closely. However, it is important to point out that these scores remain high and are within the top few police forces in the country.

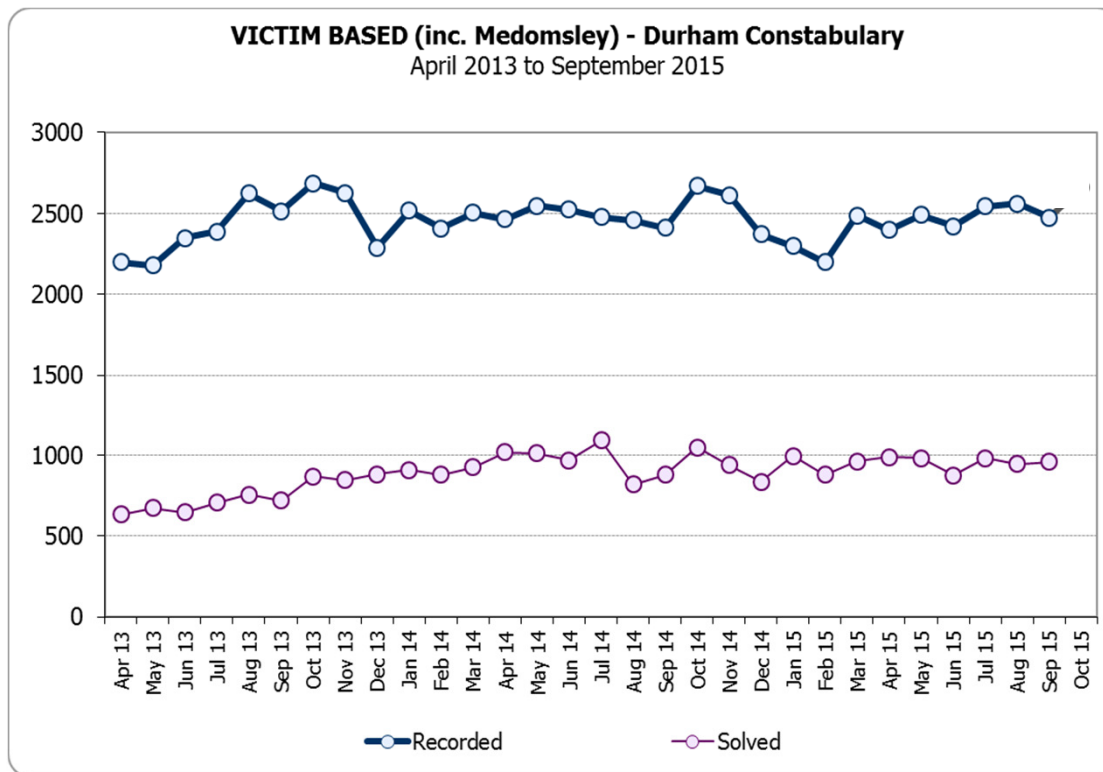
Although satisfaction with 'Follow Up' is not as high as the other areas, it is still not at a low level in comparison with other Forces. I have requested an update from the Constabulary as to what is being done to improve this and will continue to monitor it throughout the rest of the year.

[Next Page](#)

[Return to Main Screen](#)

Police and Crime Plan Objective 3 Key Indicator: **Victim-Based Crime**

	12 months to end of Sept 2013	12 months to end of Sept 2014	Difference 2013-2014	% Difference	12 months to end of Sept 2015	Difference 2014-2015	% Difference	PCC Verdict
Victim based crime – Including Medomsley	27,362	29,907	+ 2,545	+ 9.3 %	29,527	- 380	- 1.3 %	😊
Victim based crime – Excluding Medomsley	27,199	29,040	+ 1841	+ 6.8 %	29,057	+ 17	+ 0.06 %	😊



A further breakdown by crime type is available under ‘High Quality Policing’, later on in this report. [Click here](#) to go to this section

The positive start this year, with a reduction in [victim-based crime](#) compared with the previous year, is still currently being maintained.

The [Medomsley](#) investigation has now begun to see a reduction in the number of offences being recorded. This means, although people continue to report ‘historic’ offences, there are fewer cases coming forward. Therefore, the above figures that show a stabilised level of crime compared with the previous 12 months are more reflective of the level of current crime than figures may have been previously.

The Constabulary and partner organisations are working to both prevent crime, taking action where increases are anticipated, solving problems and focusing on reducing reoffending to reduce overall crime figures. It appears that this multi-agency hard work is being effective and I hope to see this continue throughout the coming months.

[Next Page](#)

[Return to Main Screen](#)

Objective 4: Deliver an Efficient Policing Service

Key area of focus: Value for money

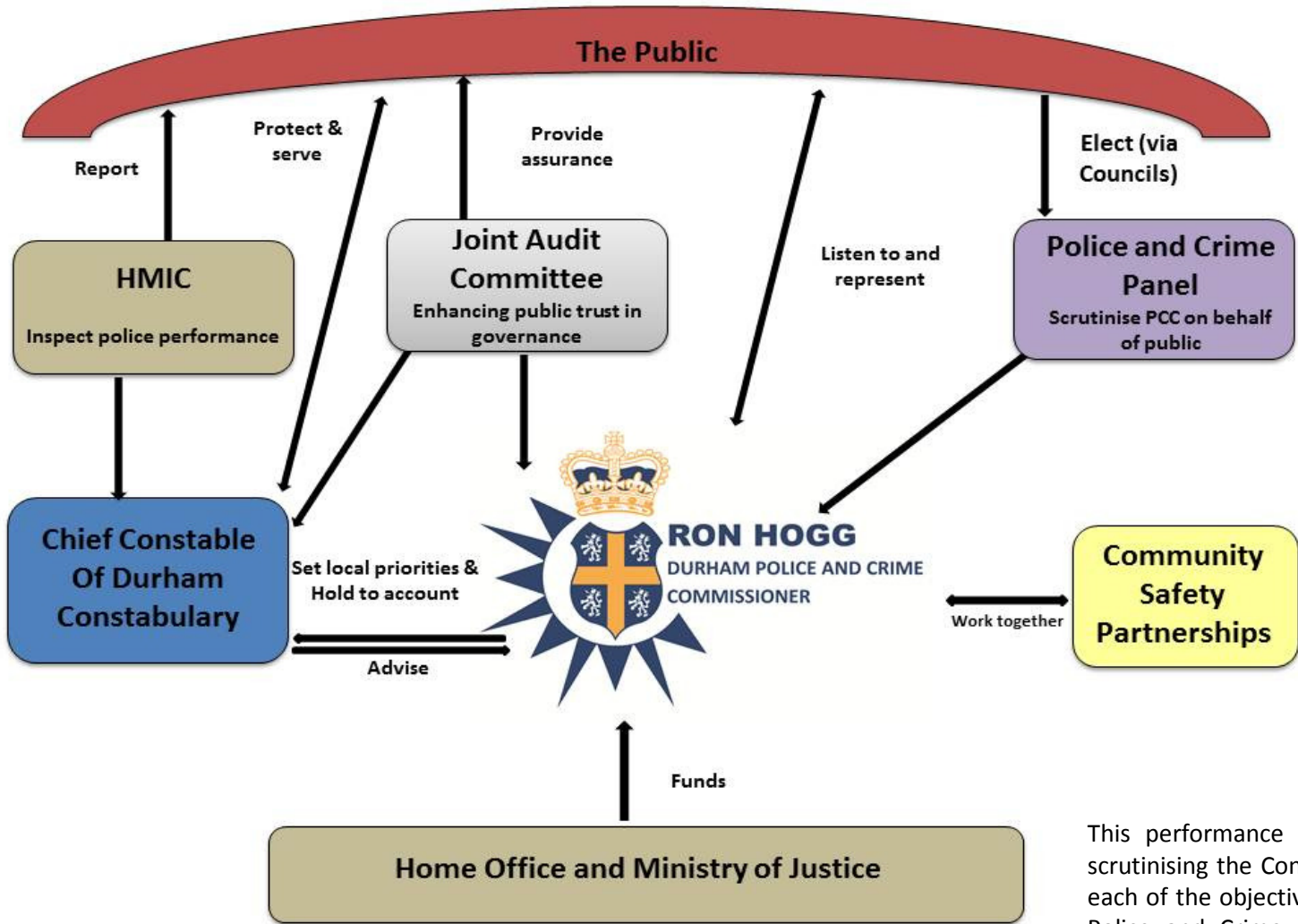
- HMIC's **Value for Money Report 2014** shows Durham Constabulary has higher detection rates, charges and cautions than the most similar forces, but lower crime figures.
- In May 2014, following a '**Policing in Austerity**' report reviewing six forces, HMIC praised Durham for their commitment to having local officers designated to specific neighbourhoods where they can engage with communities, despite the financial difficulties being faced.
- I provided £100,000 to the County Durham Community Foundation, to which they added another £50,000, to create this year's **Community Safety Fund** of £150,000. This means local community groups and organisations were able to bid for £500 - £20,000 to help with projects and initiatives that will help contribute towards community safety in County Durham and Darlington.
- I have reduced the costs of my own office by 20% since I came into post. For details on the changes I have made you can visit my website or see my Police and Crime Plan.
- The Constabulary has a Medium Term Financial Plan in place, which spans until 2018-19. Due to the uncertainty of what funds will be received by police forces in the future, the plan includes projections for a number of different potential scenarios. I will need to review this once the consultation on the review of the funding formula, and the comprehensive spending review, have concluded.
- An efficiency inspection was carried out by HMIC, which was split into 3 elements. Durham Constabulary was the **only police force in the country to receive an 'Outstanding' grade in all 3 areas**. This was based on the robust financial management, accurate budgeting and innovative problem solving solutions.



[Next Page](#)

[Return to Main Screen](#)

Objective 4: Deliver an Efficient Policing Service
Key area of focus: Robust accountability framework and performance management



Part of my role is to hold the Chief Constable to account for the delivery of my Police and Crime Plan, but I am also held to account for my role by the electorate.

There are a number of organisations involved in the scrutiny of both my role and the Constabulary's performance. The relationships between these scrutiny mechanisms are illustrated in the diagram to the left.

HMIC inspect all police forces across the country and publish their results. I also publish their findings relating to Durham Constabulary and comment on these to ensure you are kept informed of what is happening in your area.

This performance report is a key component in scrutinising the Constabulary's performance against each of the objectives and key areas of focus in my Police and Crime Plan. It then enables you, the public, and partners to understand how the police are performing.

The report is published on my website 4 times a year, but I have meetings to discuss these matters with the Chief Constable and his team every month.

There is more information regarding performance and accountability on my website.

[Next Page](#)

[Return to Main Screen](#)

High Quality Policing

Crime Type	12 months to end September 2013	12 months to end September 2014	% Difference	12 months to end September 2015	% Difference	PCC Verdict
All Crime [∨]	30,722	33,393	8.7%	32,619	- 2.3 %	😊
All Crime*	30,551	32,515	6.4%	32,142	- 1.2 %	😊
Violence Against the Person [∨]	4,430	6,049	36.5%	7,056	+ 16.6 %	😐
Sexual Offences [∨]	561	949	69.2%	1,015	+ 7 %	😊
Burglary	4,101	4,070	-0.7%	3,991	- 1.9%	😊
Vehicle Crime	3,414	3,055	-10.5%	2,516	- 17.6%	😊
Shoplifting	2,855	3,552	24.4%	3,554	+ 0.06%	😐
Criminal Damage (Inc. Arson)	6,750	6,821	1.1%	6,638	- 2.7 %	😊

*Excludes Medomsley [∨] Includes Medomsley

- There has been a reduction in **'all crime'** compared with the same period last year, which is extremely positive.
- **Sexual offences** remain at a relatively similar level to last year, a significantly higher level than previously. This shows confidence of victims to come forward to the police remains high, including for cases of historic sexual abuse. In previous months the level of reported offences had stabilised, therefore I have requested a report to look into these figures in more detail to see if there are any patterns in the types of cases that are increasing.
- The increase in **violence against the person** is expected to stabilise in the coming year, following a change in recording practices that is affecting figures nationally.
- As anticipated in this current period of austerity, the level of **shoplifting** has increased, however, a large amount of effort has been made by the Constabulary to bring this down and the level is currently stable. I am optimistic these initiatives will continue and incidents will begin to decrease.
- **Reducing reoffending** is a cross cutting key area of focus in my Police and Crime Plan, as it links to all the objectives and is a key element to reducing crime, therefore making County Durham and Darlington a safer place to live and work. To view more information, [click here](#).
- View the next page to **compare the Constabulary's performance** to all of the other police forces in the country.

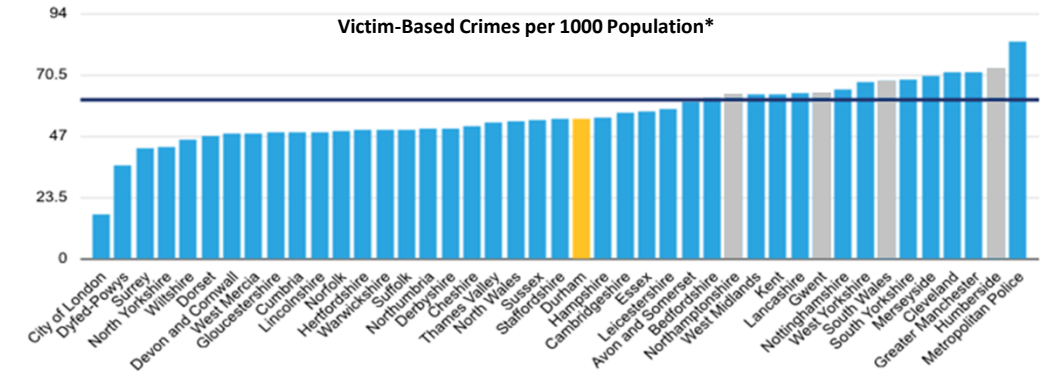
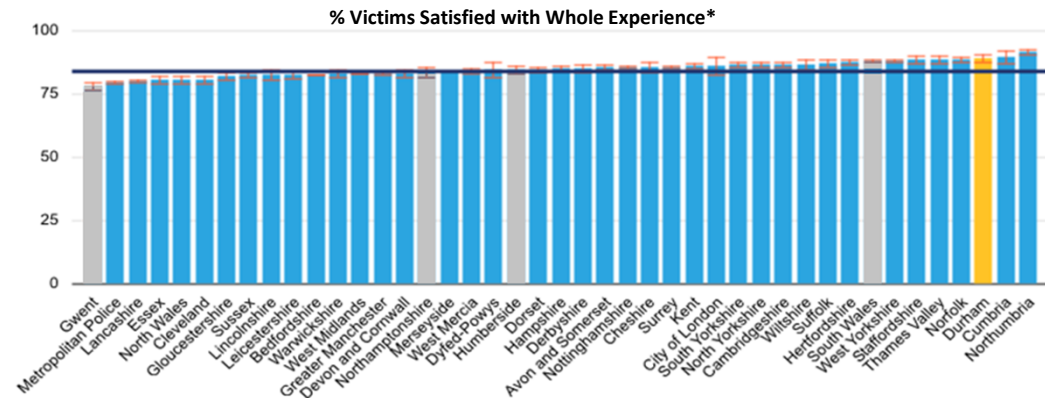
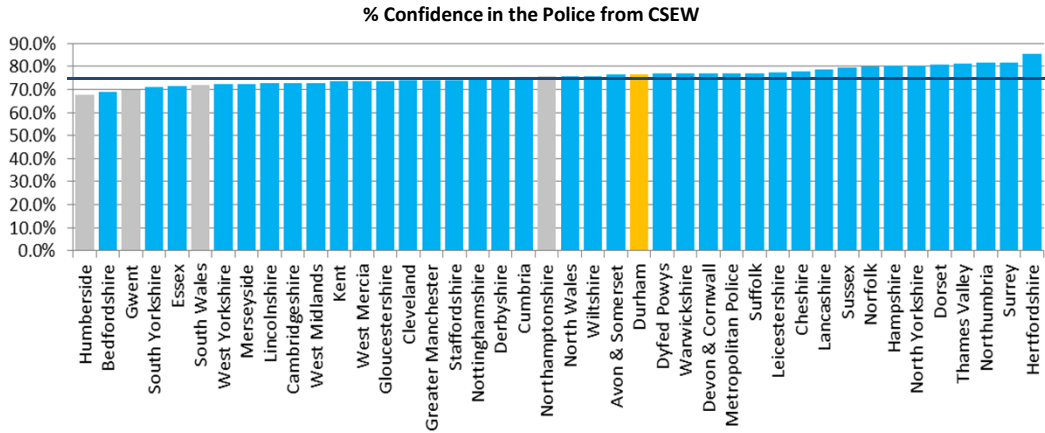
Next Page

Return to Main Screen

Comparison to Other Forces

*Data from the HMIC Crime and Policing Comparator

■ 12 months to December 2014 ■ England and Wales



This data shows Durham in comparison to the other Forces in the England and Wales (City of London is not included in the CSEW and is not classed as being comparable to other UK Forces). The 3 key performance indicators are shown here, but there is a data lag back to December 2014 as they are currently working on a new version and it will be updated once that is complete.

The most similar Forces to Durham (based on an analysis of demographic, social and economic characteristics which relate to crime) are Gwent, Humberside, South Wales and Northampton. This is known as the Most Similar Group (MSG) and is the most effective way to compare performance.

It can be seen in the graphs that Durham is performing better than the National average in all 3 areas.

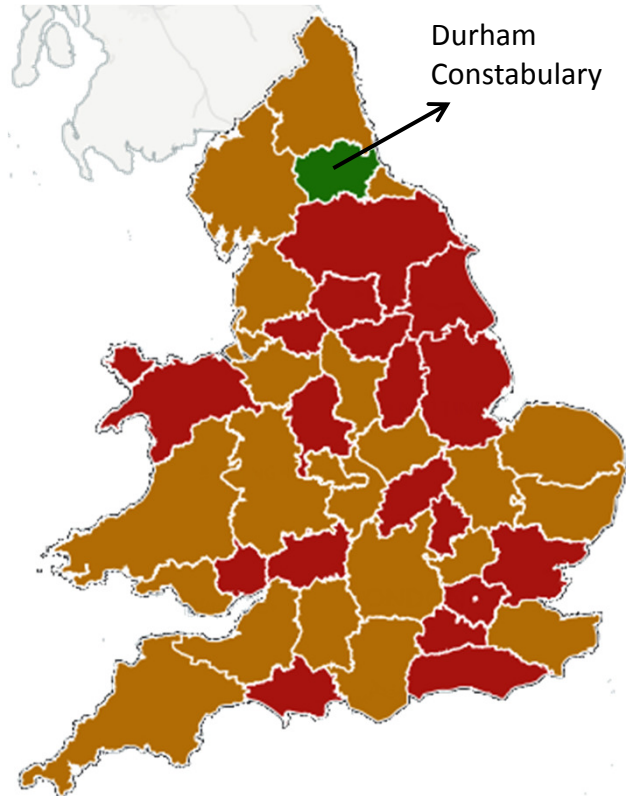
Confidence
Durham is in the top half of the rankings for confidence and is placed above all those in the MSG, as well as the neighbouring Forces of Cleveland and Cumbria.

Victim Satisfaction
Of all 43 Forces Durham is currently 3rd, with only Cumbria and Northumbria performing slightly higher.

Victim-Based Crime
Durham is placed around the middle of the Forces when ranked in order, but is well below the national average line and this figure includes Medomsley. All the MSG are showing a higher victim-based crime rate than Durham.

HMIC Inspections

Durham Constabulary is the country's top performing police force at investigating crimes, and the most efficient



How effective is the force at investigating offending?

- OUTSTANDING
- GOOD
- REQUIRES IMPROVEMENT
- INADEQUATE (NONE RANKED)

In the first Annual Assessment of Policing in England and Wales 2014 (PEEL Report), HMIC assessed all 43 police forces in the country for effectiveness, efficiency and legitimacy.

I am incredibly happy to be able to report that Durham was the only force to be rated as '**outstanding**' at investigating crimes. The force was also judged to be '**outstanding**' at tackling anti-social behaviour and '**good**' at preventing offending and reducing crime.

Most recently, it was the only force to receive 3 '**outstanding**' grades following an efficiency inspection (see 'Value for Money' section).

This means that the last two HMIC PEEL inspections have seen Durham as the only force out of all 43 in the country to receive five outstanding grades out of six, with the remaining one graded as good. Therefore, **Durham Constabulary has been rated the top performing police force in the country.**

The HMIC inspection in April 2014 of police responses to Domestic Abuse at all forces across the country was extremely positive for Durham Constabulary. They were commended as being one of only eight forces who have been deemed as doing a good job in this area.

It is incredibly encouraging to see these grades and that the hard work of all within the organisation is being recognised. It is reassuring to all citizens that their police force is receiving such excellent evaluations from independent scrutiny. However, I want to stress that the Chief Constable and I are not complacent, and we will continue to strive to achieve even higher levels of service. I remain committed to protecting neighbourhood policing.

[Next Page](#)

[Return to Main Screen](#)

Conclusions

- Reported crime is currently around the same level as the same period last year, which is encouraging, but I am optimistic this may change to a decrease as we move through the next few months.
- A level of public confidence in the police above the national average is leading to increased reporting of some types of victim-based crimes that were previously under-reported, such as domestic abuse and sexual offences, which is very positive and will continue to be a focus.
- Despite a very slight drop, victim satisfaction scores are very positive and something to be commended.
- Given the cuts to funding police forces nationwide are experiencing, this performance data and the high grades from HMIC shows the force is efficiently using it's budget to tackle offenders and reduce crime.
- Durham Constabulary has been rated the top performing police force in the country.



[Next Page](#)

[Return to Main Screen](#)

Glossary

Anti-Social Behaviour

A wide range of behaviours, which cause alarm, distress or harassment to at least one person. They are separated into 3 categories: Personal (targeted at a specific individual or group), Nuisance (causing annoyance to the wider community) and Environmental - (incidents aimed at the physical environment).
The force add flags highlighting alcohol, youth and drug related incidents. In some cases one incident can have more than one flag (e.g. both alcohol and youth related), which means it will be included in the figures on the local graphs twice (once in the alcohol and a once in the youth). But, this is not the case in the overall figures.

CSEW

The Crime Survey England and Wales is a national survey about experiences of crime from members of the public across the Country.

Crime Statistics

All crime statistics in this document are from the Durham Constabulary recorded crime and incident database.

HMIC

Her Majesty's Inspectorate of Constabulary, inspect the Country's police forces.

Local Survey

Local survey conducted by Durham Constabulary.

MARAC

Multi Agency Risk Assessment Centre – a victim-focused meeting where information is shared between agencies on the highest risk cases of domestic violence and abuse to discuss the best ways to help the victim and minimise the risk.

Medomsley Case

Also known as Operation Seabrook, this is an investigation into serious sexual and physical abuse carried out by staff against inmates at the Medomsley Detention Centre near Consett, mainly in the 1970's and 1980's.

MP Surgery

A meeting for local people to attend and discuss any concerns with their local Member of Parliament (MP).

Victim Based Crime

These are crimes against a victim, and are split into 5 categories: violence against the person, sexual offences, robbery, theft offences, criminal damage and arson offences



- I am happy with the performance.



- I will be closely monitoring performance.
This is an area for continued focus.



- I am unhappy with the performance
and looking at ways to improve.

[Return to Main Screen](#)